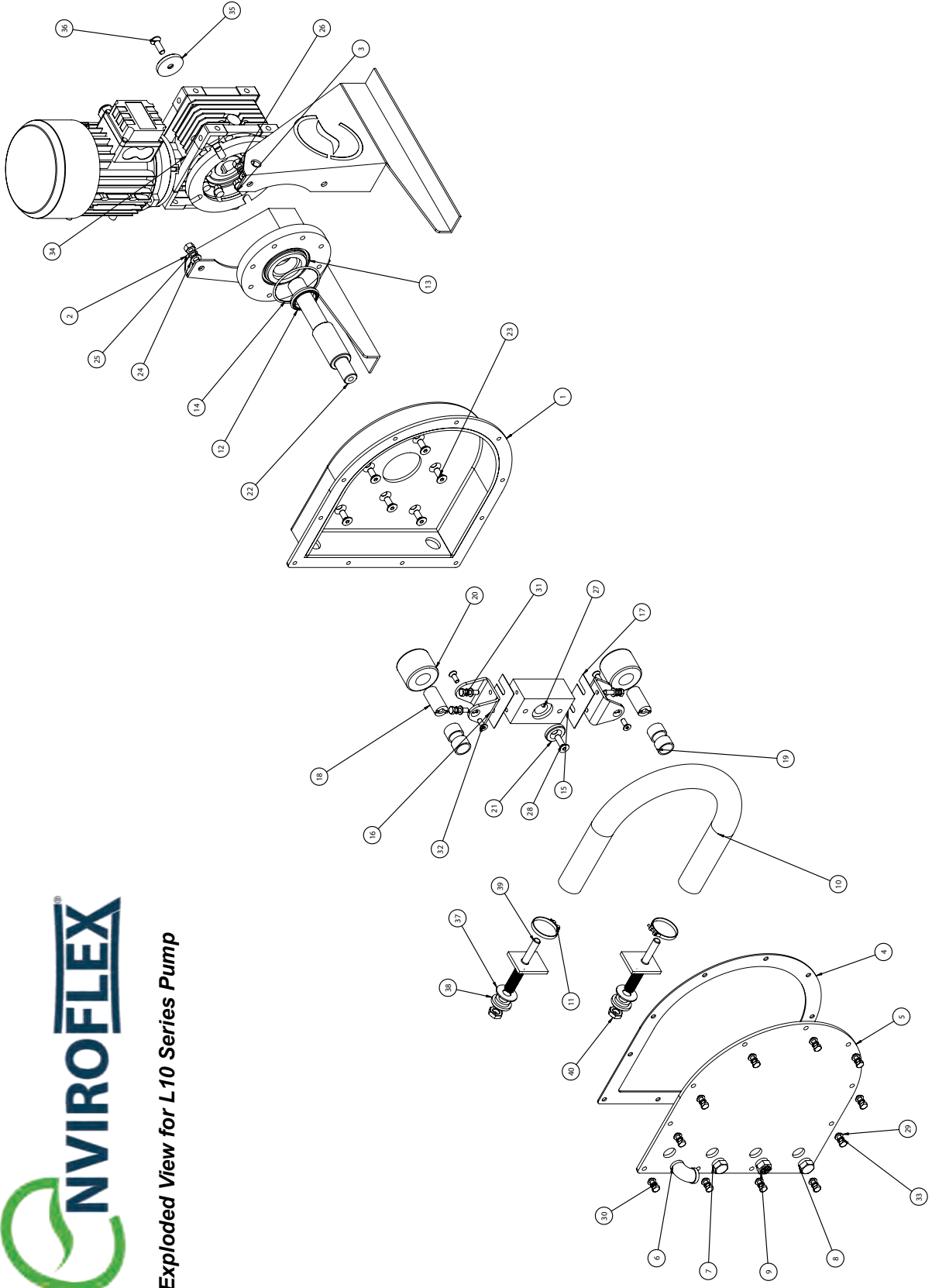




Exploded View for L10 Series Pump



L10 Series Pump Parts List

| Item No. | Part Number | Description | * Weight (gramme) Per Unit | Qty. |
|----------|------------------------------------|---|----------------------------|------|
| 1 | L-10-PH-1 Pump Housing | Housing Body | 4695.63 | 1 |
| 2 | L-10-F-L-1 | Pump Frame Left | 1252.29 | 1 |
| 3 | L-10-F-R-1 | Pump Frame Right | 1252.28 | 1 |
| 4 | L-10-FC-DS-1 | Front Cover Door Seal | 60.21 | 1 |
| 5 | L-10-FC-1 | Front Cover | 3095.61 | 1 |
| 6 | LT-5000S | Breather Elbow | 32.75 | 1 |
| 7 | LP-1003 | Fill Plug | 9.52 | 1 |
| 8 | LP-1004 | Drain Plug | 9.52 | 1 |
| 9 | LT-5012 | Sight Glass | 9.86 | 1 |
| 10** | L-10-NRH | Pump Hose - NATURAL RUBBER | 395.75 | 1 |
| | L-10-NRH-FG | Pump Hose - NATURAL RUBBER (FOOD GRADE) | 395.75 | 1 |
| | L-10-NIT-IND | Pump Hose - NITRILE (INDUSTRIAL) | 395.75 | 1 |
| | L-10-NIT-FG | Pump Hose - NITRILE (FOOD GRADE) | 395.75 | 1 |
| | L-10-EPDM | Pump Hose - EPDM | 395.75 | 1 |
| | L-10-HYP | Pump Hose - HYPALON | 395.75 | 1 |
| 11** | LC-4014 | Hose Clip | 7.00 | 2 |
| 12 | LS-6000 | Drive Protection Seal | 3.00 | 1 |
| 13 | L-10-GB-MF-1 | Gearbox Adaptor Plate | 670.74 | 1 |
| 14 | LS6808 | Gearbox Mounting O Ring | 1.79 | 1 |
| 15 | L-10-R-1 | Rotor | 420.70 | 1 |
| 16 | L-10-R-C-1 | Roller Carrier | 149.09 | 4 |
| 17 | L-10-SH-3 / L10-SH-4 | Shim 0.6mm / Shim 1.0mm | 11.91 | 4/8 |
| 18 | L10-ROL-SH-1 | Roller Shaft | 89.20 | 2 |
| 19 | L-10-ROL-B-1 | Roller Bush | 2.38 | 4 |
| 20 | L-10-ROL-1 | Roller | 67.34 | 2 |
| 21 | L-10-R-RC-1 | Roller Clamp Washer | 22.37 | 1 |
| 22 | L-10/15-R-RS-5 | Rotor Shaft | 784.48 | 1 |
| 23 | LB-1213 | Adaptor Plate to Pump Housing Fixing | | 8 |
| 24 | LW-3001 | Flat Washer | | 4 |
| 25 | LW-3101 | Spring Washer | | 4 |
| 26 | LN-2000 | Nut | | 4 |
| 27 | L-10/15-R-SK-2 | Rotor Shaft Key | | 1 |
| 28 | LB-1214 | Rotor to Motor Fixing | | 1 |
| 29 | LB-3000 | Flat Washer | | 15 |
| 30 | LB-3100 | Spring Washer | | 15 |
| 31 | LB-1255 | Roller Carrier Fixings | | 4 |
| 32 | LB-1256 | Roller Shaft Fixings | | 2 |
| 33 | LB-1003 | Front Cover Fixings | | 11 |
| 34 | L10 L15 Gearbox and Motor Assembly | | | 1 |
| 35 | L-10-R-GC-1 | Gearbox Clamp Washer | 54.22 | 1 |
| 36 | LB-1014 | Gearbox to Rotor Shaft Fixing | | 1 |
| 37 | L-10-HC-CS-1 | Sealing Washer | 1.74 | 2 |
| 38 | L-10-HC-C-1 | Hose Connector Collar | 30.71 | 2 |
| 39 | L-10-HC-1 | Hose Connector 1/4" BSP | 128.49 | 2 |
| 40 | LN-4101 | Hose Connector Fixing | | 2 |

* 1 g = 0.0353 ounce / 0.0022 pound

** Recommended spares with 0.75 litres of Envirolube Lubricant.