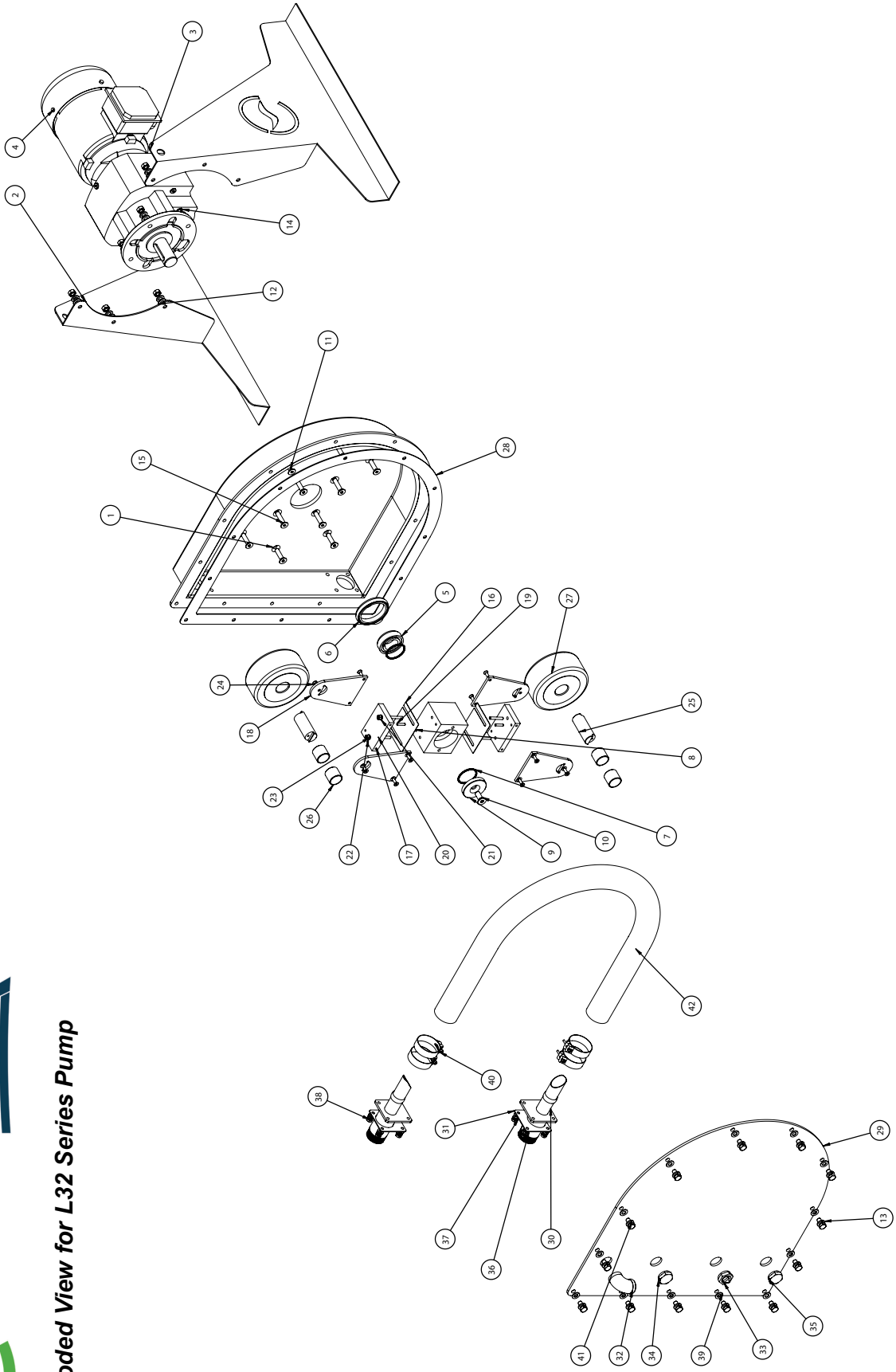




Exploded View for L32 Series Pump



L32 Series Pump Parts List

Item No.	Part Number	Description	* Weight (gramme) Per Unit	Qty.
1	L-32-PH-1	Housing Body	43351.56	1
2	L-32-F-R-1	Pump Frame Right	5120.60	1
3	L-32-F-L-1	Pump Frame Left	5120.61	1
4	L-32-Motor and Gearbox	Motor and Gearbox	11678.00356	1
5	L-32-R-RS-1	Rotor Spacer	335.17	1
6	LS-6300	Drive Protection Seal	28.50	1
7	LS-6301	Rotor Clamp O Ring	1.37	2
8	L-32-R-1	Rotor	1389.90	1
9	L-32-R-RC-1	Rotor Clamp Washer	203.52	1
10	LB-1229	Rotor Clamp Bolt		1
11	LB-1235	Frame Mounting Screw		6
12	LW-3002	Flat Washer		10
13	LW-3102	Spring Washer		23
14	LN-2002	Nut		10
15	LB-1238	Gearbox Mounting Screw		4
16	L-32-SH-3 / L-32-SH-4	Shim 0.6mm / Shim 1.0mm	33.82	A/R
17	L-32-ROL-M-1	Roller Mount		2
18	L-32-ROL-SP-1	Roller Side Plate	492.51	4
19	LD-7000	Roller Mount Dowel		4
20	LB-1280	Roller Mount Fixing		4
21	LB-3000	Flat Washer		4
22	LB-3100	Spring Washer		4
23	LN-4010	Nut		4
24	ISO 10642 - M6 x 20 --- 20N			12
25	L-32-ROL-SH-1	Roller Shaft	396.39	2
26	L-32-ROL-B-1	Roller Bush	48.04	4
27	L-32-ROL-1	Roller	1011.40	2
28	L-32-FC-DS-1	Front Cover Door Seal	185.28	1
29	L-32-FC-1	Front Cover	15612.36	1
30	L-32-HC-1	Hose Connector	1047.97	2
31	L-32-HC-CS-1	Hose Flange Seal	9.79	2
32	LT-5100S	Breather Elbow	101.921	1
33	LT-5012	Sight Glass	32.68	1
34	LP-1001	Fill Plug	28.81	1
35	LP-1002	Drain Plug	28.81	1
36	LW-3001	Flat Washer		8
37	LW-3101	Spring Washer		8
38	LB-1231	Hose Connector Screw		8
39	LW-3002	Flat Washer		13
40**	LC-4017	Hose Clamp L32	51.31	4
41	LB-1037	Front Cover Screw		13
42**	L-32-NRH	Pump Hose - NATURAL RUBBER	3096.60	1
	L-32-NRH-FG	Pump Hose - NATURAL RUBBER (FOOD GRADE)	3096.60	1
	L-32-NIT-IND	Pump Hose - NITRILE (INDUSTRIAL)	3096.60	1
	L-32-NIT-FG	Pump Hose - NITRILE (FOOD GRADE)	3096.60	1
	L-32-EPDM	Pump Hose - EPDM	3096.60	1
	L-32-HYP	Pump Hose - HYPALON	3096.60	1

* 1 g = 0.0353 ounce / 0.0022 pound

** Recommended spares with 5.0 litres of Envirolube Lubricant.