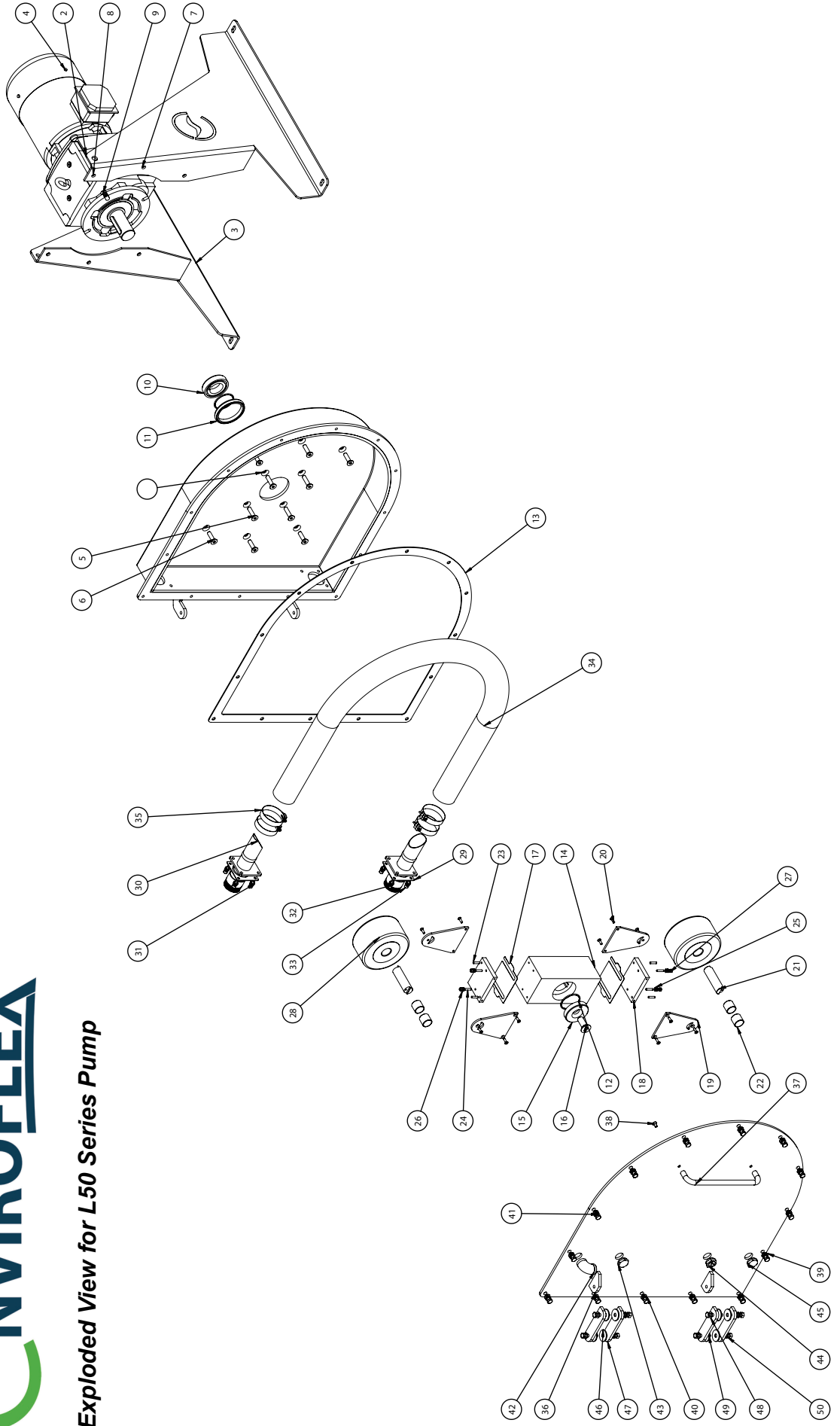




Exploded View for L50 Series Pump



L50 Series Pump Parts List

Item No.	Part Number	Description	* Weight (gramme) Per Unit	Qty.
1	L-50-PH-1	Housing Body	88040.96	1
2	L-50-F-L-1	Pump Frame Left	16263.51	1
3	L-50-F-R-1	Pump Frame Right	16263.51	1
4	D-L-50-Gear Box and Motor	Gearbox and Motor		1
5	LB-1230	Gearbox Mounting Screw		4
6	LB-1228	Frame Mounting Screw		6
7	LW-3003	Flat Washer		10
8	LW-3103	Spring Washer		10
9	LN-2003	Nut		10
10	L-50-R-RS-1	Rotor Spacer	736.67	1
11	LS-6500	Drive Protection Seal		1
12	LS-6501	Rotor Clamp O Ring	2.52	2
13	L-50-FC-DS-1	Front Door Seal	406.99	1
14	L-50-R-1	Rotor	7789.00	1
15	L-50-R-RC-1	Rotor Clamp Washer	655.71	1
16	LB-1240	Rotor Clamp Screw		1
17	L-50-SH-1 / L-50-SH-2	Shim 0.6mm / Shim 1.0mm	53.09	4/8
18	L-50-ROL-M-1	Roller Mount		2
19	L-50-ROL-SP-1	Roller Side Plate	636.01	4
20	LB-1232	Roller Side Plate Screw		12
21	L-50-ROL-SH-1	Roller Shaft		2
22	L-50-ROL-B-1	Roller Bush	48.04	4
23	LD-7000	Roller Mount Dowel		4
24	LB-1281	Roller Mount Fixing		4
25	LB-3000	Flat Washer		4
26	LB-3100	Spring Washer		4
27	LN-4010	Nut		4
28	L-50-ROL-1	Roller	2111.27	2
29	L-50-HC-CS-1	Hose Connector Seal	12.73	2
30	L-50-HC-1	Hose Connector	1079.04	2
31	LW-3001	Flat Washer		8
32	LW-3101	Spring Washer		8
33	LB-1231	Hose Connector Screw		8
34**	L-50-NRH	Pump Hose - NATURAL RUBBER	6722.09	1
	L-50-NRH-FG	Pump Hose - NATURAL RUBBER (FOOD GRADE)	6722.09	1
	L-50-NIT-IND	Pump Hose - NITRILE (INDUSTRIAL)	6722.09	1
	L-50-NIT-FG	Pump Hose - NITRILE (FOOD GRADE)	6722.09	1
	L-50-EPDM	Pump Hose - EPDM	6722.09	1
	L-50-HYP	Pump Hose - HYPALON	6722.09	1
35**	LC-4019	Hose Clip	61.21	4
36	L-50-FC-1	Front Cover	39753.58	1
37	LH-4000	Handle	227.52	1
38	LB-1269	Front Cover Handle Fixing		2
39	LW-3002	Flat Washer		14
40	LW-3102	Spring Washer		18
41	LB-1026	Front Cover Screw		14
42	LT-5100S	Breather Elbow	101.92	1
43	LP-1001	Fill Plug	28.81	1
44	LT-5012	Sight Glass	32.68	1
45	LP-1002	Drain Plug	28.81	1
46	L-50-67	Friction Hinge Washer	3.95	8
47	L-50-66	Hinge Link Plate		4
48	LW-3002	Flat Washer		8
49	LB-1274	Hinge Screw		4
50	LN-2002	Nut		4

* 1 g = 0.0353 ounce / 0.0022 pound

** Recommended spares with 10 litres of Envirolube Lubricant.