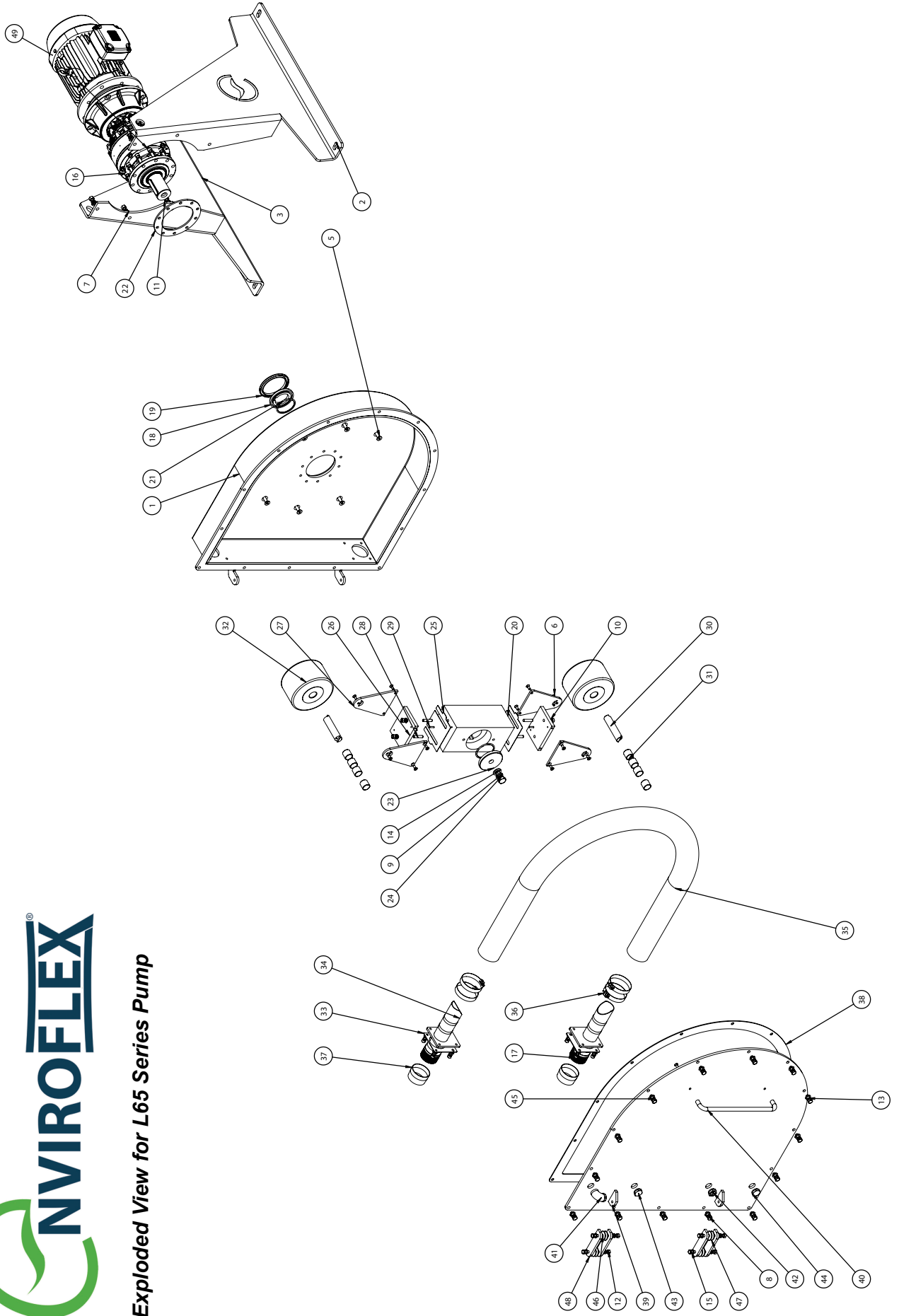




Exploded View for L65 Series Pump



L65 Series Pump Parts List

Item No.	Part Number	Description	* Weight (gramme) Per Unit	Qty.
1	L-65-PH-1	Housing Body	123018.97	1
2	L-65-F-L-1	Pump Frame Left	35654.28	1
3	L-65-F-R-1	Pump Frame Right	35654.23	1
4	L-65-Gearbox	Gearbox	48719.85	1
5	LB-3230	Frame Mounting Screw		6
6	LB-3213	Roller Side Plate and Roller Shaft Screw		14
7	LW-5003	Flat Washer		6
8	LWS-5103	Spring Washer		20
9	LW-5104	Spring Washer		1
10	LW-5102	Spring Washer		16
11	LN-4003	Nut		6
12	LN-5102	Nut		8
13	LW-5003	Flat Washer		24
14	LW-5004	Flat Washer		1
15	LW-5002	Flat Washer		20
16	LB-3270	Gearbox Mounting Screw		10
17	LB-3275	Hose Connector Screw		8
18	L-65-R-RS-1	Rotor Spacer	538.21	1
19	LS-6800	Drive Protection Seal	29.95	1
20	L-65-R-1	Rotor	15093.56	1
21	LS-6801	Rotor Spacer O Ring	6.12	2
22	L-65-81	Gearbox Spacer	931.56	1
23	L-65-R-RC-1	Rotor Clamp Washer	894.79	1
24	LB-3271	Rotor Clamp Bolt		1
25	L-65-SH-1 / L-65-SH-2	Shim 0.6mm / Shim 1.0mm	88.54	A/R
26	L-65-ROL-M-1	Roller Mount	2223.85	2
27	L-65-ROL-SP-1	Roller Side Plate	1220.17	4
28	LB-3279	Roller Mount Fixing		4
29	LD-7000	Roller Mount Dowel		4
30	L-65-ROL-SH-1	Roller Shaft	710.05	2
31	L-65-ROL-B-1	Roller Bush	48.85	8
32	L-65-ROL-1	Roller	3664.83	2
33	L-65-HC-CS-1	Hose Connector Seal	24.44	2
34	L-65-HC-1	Hose Connector	2369.20	2
35**	L-65-NRH	Pump Hose - NATURAL RUBBER	11681.65	1
	L-65-NRH-FG	Pump Hose - NATURAL RUBBER (FOOD GRADE)	11681.65	1
	L-65-NIT-IND	Pump Hose - NITRILE (INDUSTRIAL)	11681.65	1
	L-65-NIT-FG	Pump Hose - NITRILE (FOOD GRADE)	11681.65	1
	L-65-EPDM	Pump Hose - EPDM	11681.65	1
	L-65-HYP	Pump Hose - HYPALON	11681.65	1
36**	LC-4020	Hose Clip	70.69	4
37	L-65-CON-CAP	Hose Connector Cap	32.86	2
38	L-65-FC-DS-1	Front Door Seal	609.75	1
39	L-65-FC-1	Front Cover	68786.85	1
40	LH-4001	Handle	288.81	1
41	LT-5100S	Breather Elbow	101.92	1
42	LT-5012	Sight Glass	32.68	1
43	LP-1001	Fill Plug	28.81	1
44	LP-1002	Drain Plug	28.81	1
45	LB-3242	Front Cover Screw		14
46	LB-3274	Hinge Screw		4
47	L-65-56	Friction Hinge Washer	3.95	8
48	L-65-53	Hinge Link Plate	411.16	4
49	Motor	Motor		1

* 1 g = 0.0353 ounce / 0.0022 pound

** Recommended spares with 20 litres of Envirolube Lubricant.